

HEE National Commissioning Work: Anaesthesia Associates

Laura McEwen-Smith; National Programme Lead

[13-09-2022]



Developing people
for health and
healthcare

www.hee.nhs.uk

Image credit: Association of Anaesthesia Associates

Current Activity Overview

Supporting a sustainable increase in supply

- Developing educational capacity and infrastructure to support workforce expansion – key activity:
 1. National funding offer for AAs
 - *The funding offer is available for up to a combined max. of 120 students/year (total 240 new students over two years)*
 2. National commission of AA blended learning programmes for 2022/23
 - *Commissioned programmes will be available for first intake between January 2023 and March 2023.*
 3. HEE funding to Royal College of Anaesthetists to further develop the Faculty of AAs
 - *Wide ranging programme of work*

National funding model (cont.)

- Funding can be utilised to support AA students who start programme:
 - between April '22 to March '23 (funded cohort 1)
 - between April '23 to March '24 (funded cohort 2)
- Funding allocated via HEE regions to NHS Trusts following EOI and confirmation process **each year**
- Salary contribution at a nationally set rate: 100% in Year 1, 50% in Year 2.
- Tuition fee contribution can be utilised for existing AA programmes **and** new commissioned blended learning
- Supervision contribution: based on identified common 'minimum' through scoping:

Time 0.25 PA weekly

Level Consultant Anaesthetist or Non-Consultant at Associate Specialist level.

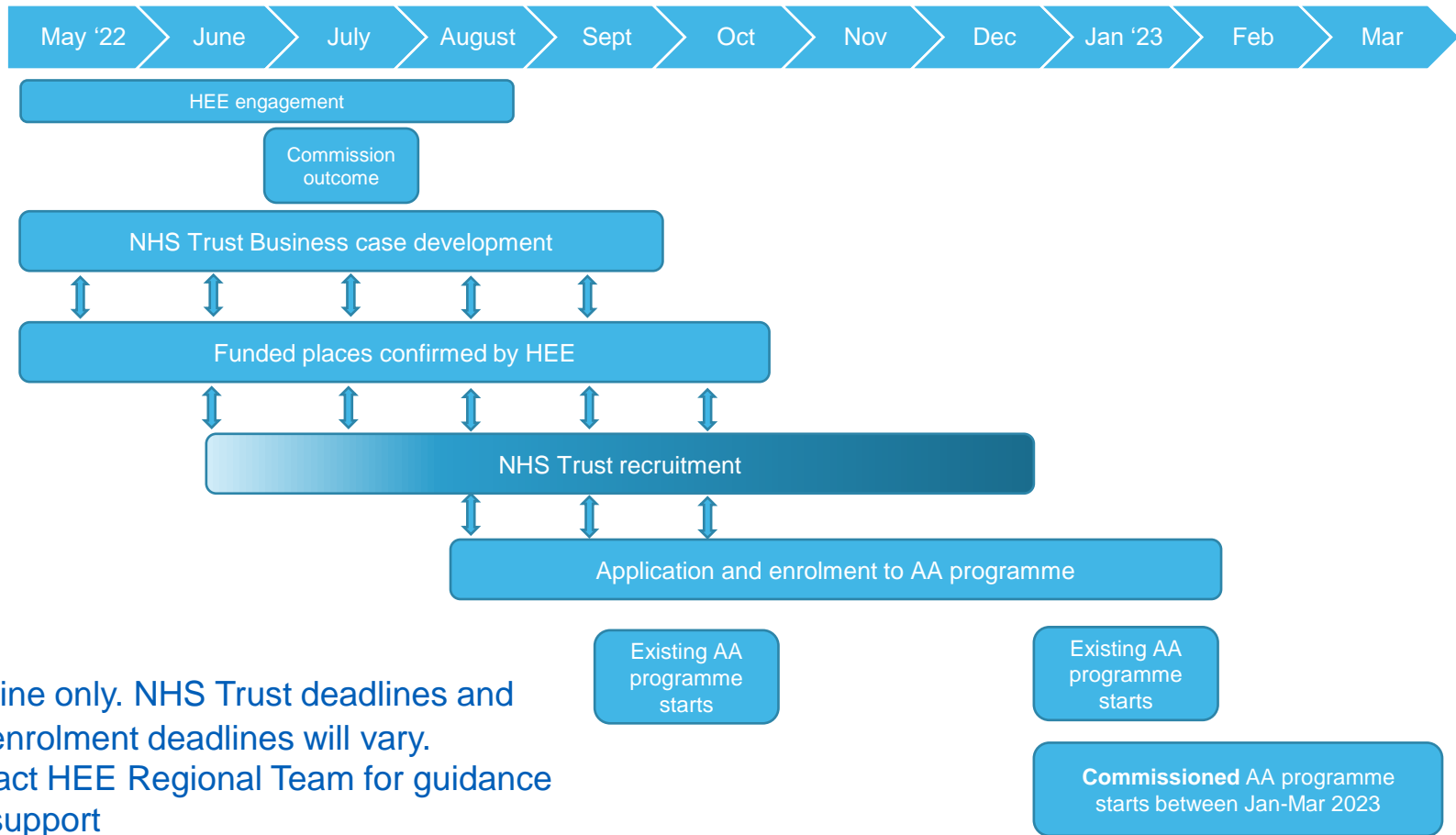
Cost – approx. £2.7k/year per trainee (assuming a consultant anaesthetist salary at mid-point 2003 contract)

AA Blended Learning Commission

- Strategic objectives of this national commission
 - to stimulate the provider market to deliver predominantly online, remote access study
 - to deliver broader national coverage of education provision
 - to enable widening participation in AA training
- The commission is for **development and delivery** of blended learning (*not linked to funded places*) to commence by Mar '23
- Outcome announced July 2022:
 - Lancaster Medical School
 - UCL
- University of Birmingham have an existing programme (not HEE commissioned).
- Contact providers for programme application, enrolment and start dates.

Timelines

*demonstrating interdependency between funding offer and national programme commission**



*Outline only. NHS Trust deadlines and HEI enrolment deadlines will vary. Contact HEE Regional Team for guidance and support

Current Activity Overview

Developing and shaping post-registration education, training, and careers

Medical Associate Professions Career Development Framework



Core Capabilities Framework

- Published June 2022; *component 1 of 2*

Education, Training and Career Pathway

- Expected Autumn 2023; *component 2 of 2*

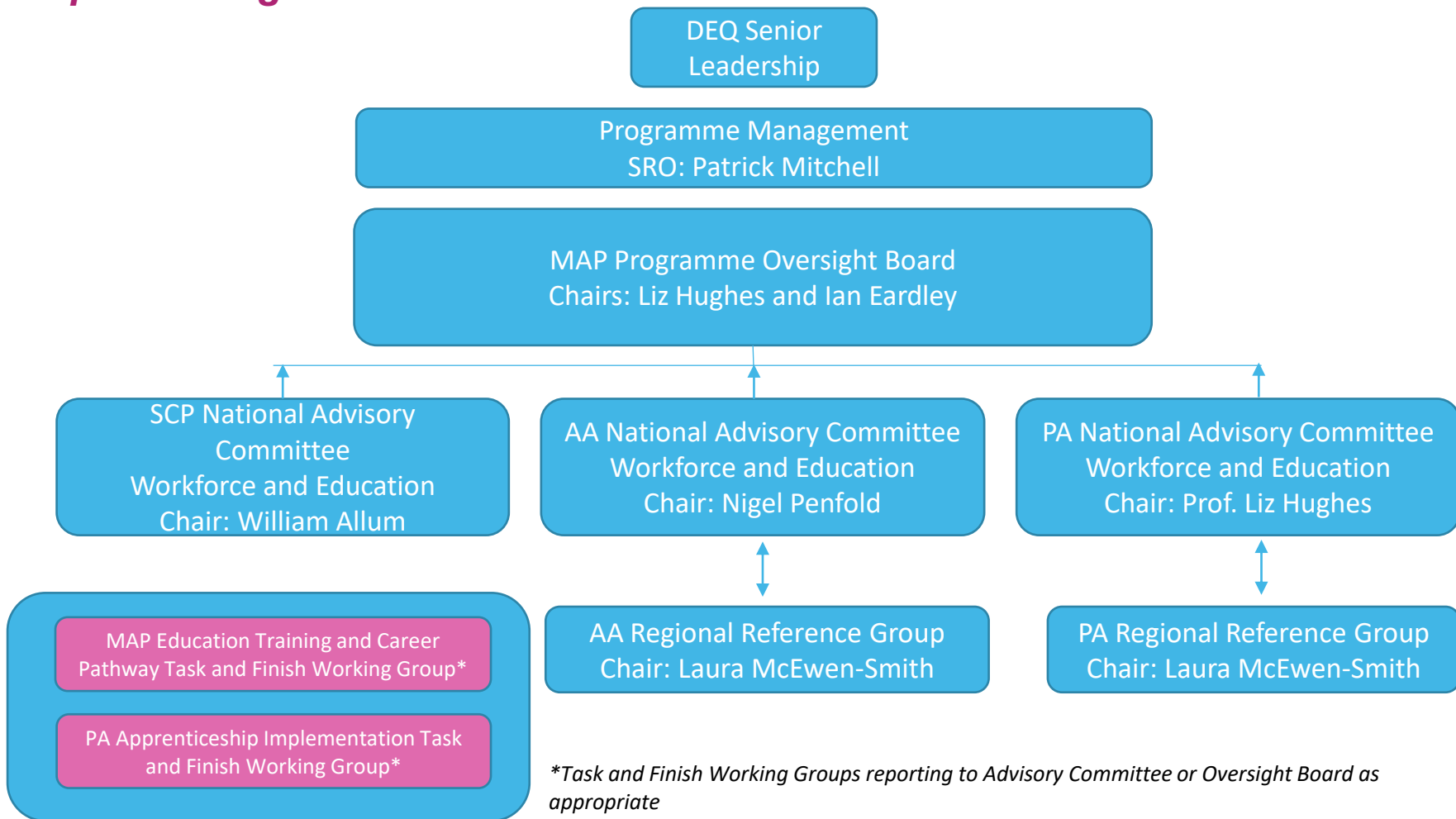


Regional HEE teams work with us to:

1. Grow workforce supply through a funding model and regional provision
2. Grow employer demand through targeted engagement and support
3. Increase support and investment in post qualification AA training and career progression
4. Improve AA workforce data to support workforce planning and monitoring
5. Agree supporting regional HEE infrastructure
6. Reduce variation in AA employment and remuneration

MAP Programme Governance

implementing from June 2022



**Task and Finish Working Groups reporting to Advisory Committee or Oversight Board as appropriate*

The HEE Medical Associate Professions programme governance architecture is designed to support local knowledge and regional perspective informed initiatives, plans and strategic commissioning priorities for AA nationally.

For more information

maps@hee.nhs.uk